

PARTS CLEANING SOLUTIONS

A RANGE OF EQUIPMENT DESIGNED
TO LOWER ENVIRONMENTAL IMPACT
IN PRODUCTION, MAINTENANCE,
OVERHAUL AND REPAIR FACILITIES



rozone

www.rozone.co.uk

INTRODUCING ROZONE



Increase Efficiency



Reduce Waste



Operator Safety



Cost Control

For more than 25 years, Rozone has led the development of microbiological parts washers and other sustainable chemistries to improve the way people clean across a wide variety of industries.

We help customers improve efficiency, reduce the use of harsh chemicals in their cleaning processes, safeguard the health and safety of staff and lower impact on the environment.

Our high-performing, innovative solutions are used across a huge range of sectors from Automotive and Motorsport to Emergency Services and Public Sector Workshops, Bike and Micromobility, Tool and Plant Hire, Fire and Flood Damage Restoration and Commercial Kitchen Cleaning.



EXPERTISE

We pioneered the introduction of bioremediating parts washers to Europe over 25 years ago and have supplied tens of thousands of machines to a wide variety of industries incl. Aerospace, Automotive, Cycle, Defence and Engineering.



SCIENCE LED

We partner with the Microbiology Department at the University of Wolverhampton to ensure ROwasher stands at the forefront of bioremediating technology.



SUPPORT

We're on hand to guide, advise and support customers. We provide onsite training and ongoing aftersales care for your parts washer machine. Our technical team ensure customers get the best performance from our products.

OUR RANGE

ECO-FRIENDLY PARTS CLEANING

We are proud to have developed the latest generation in eco-friendly parts cleaning - ROWasher, which offers a powerful alternative to solvent parts washers.

Using the clever science of bioremediation – nature`s clever way of cleaning up, ROWasher self-recycles its own cleaning solution. This dramatically reduces waste fluid generation and brings significant savings and SHE benefits.

AUTOMATIC PARTS CLEANING

If you are looking for a faster clean or have multiple components to wash, our stainless steel, aqueous spray wash machines provide automated cleaning that leaves technicians free to work on other tasks, increasing workshop productivity and saving on costs.

CHEMISTRIES AND APPLICATION

Our associated range of own formulation chemical products, have all been designed to effectively clean, protect and restore a wide variety of surfaces using water-based or safer solvent-based cleaners and degreasers.

We've learnt over the years that use of correct application equipment can have a huge effect on the efficacy of cleaning operations and that`s why we don`t just supply the cleaning product itself. We have a range of application equipment and ancillary goods to complement our chemicals so your cleaning operations can be performed to the highest standards.

INDEX

Biological Parts Washer	Page 04-06
ROWasher Degreasing Solution	Page 07
Microbial Filter Mat	Page 08
Spray Wash Systems	Page 10
Semi-Automatic Jetwash Systems	Page 11
Automatic Spray Wash Systems	Page 12
Ultrasonic Cleaning	Page 13
Pre-Soaking	Page 13
Chemistries and Application	Page 14

THE ROWASHER SERIES

BIOLOGICAL PARTS WASHER

ROWASHER

The ROWasher is the most technologically and environmentally advanced manual parts washer on the UK market. It makes parts cleaning a quicker, safer, and more pleasant experience.

With a host of “green” credentials, this clever eco-friendly parts washer uses a process called bioremediation to effectively self-recycle its own cleaning solution.

This minimises its waste fluid generation bringing huge cost savings to the user and lowering impact on the environment.

- Fast & efficient cleaning & degreasing
- Oil-eating microbe technology reduces waste
- Easily maintained in-house
- No costly service contracts
- Assists compliance, reduces risk assessments
- Static, mobile, XL available



ROWasher is the solvent-free, safe alternative to harsh cleaning chemicals. It safeguards the health and safety of employees and assists compliance with ISO14001.

KEY BENEFITS OF THE ROWASHER

KEY BENEFITS	ENVIRONMENTAL BENEFITS	HEALTH & SAFETY BENEFITS
<ul style="list-style-type: none">Solvent freeNon-flammable, non-hazardous degreasing fluidHeated to 42°C, better cleaning, more pleasant to useNo monthly service contractsReduced waste disposal costsEnergy cost savings with inbuilt Eco-mode	<ul style="list-style-type: none">Lower risk to the environmentNo VOC emissionsNo “Solvent Emissions Directive”Improved carbon footprintAssists compliance with latest legislation such as ISO14001	<ul style="list-style-type: none">No risk to employeesReduced PPE requirementNon-toxic degreasing fluidNo vapoursSimplified CoSHH reporting

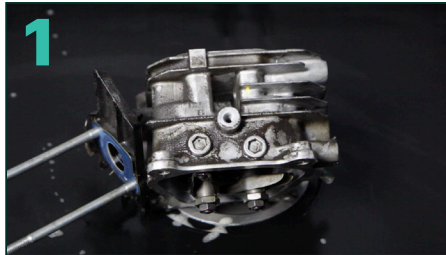
As Powerful as Solvent, Without the Hazards

Designed to clean dirty, oily parts, ROWasher offers a powerful alternative to solvent parts cleaning. The ROWash Degreasing Solution effortlessly cuts through grease and grime to leave parts like new. But the clever part comes, in the way ROWasher deals with its used fluid.

ROWasher uses the SCIENCE of bioremediation – NATURE’S clever way of cleaning up, using naturally occurring microbes to dramatically reduce its waste fluid generation. It’s not just us saying this, with millions of parts being ROWashed on a daily basis, it is a well-proven technology.

BIOLOGICAL PARTS WASHER

HOW ROWASHER WORKS



1
Oil and grease are washed off the dirty part and flow through the Microbial Filter Mat in the sink into the ROwasher tank.



2
The Filter Mat is the KEY to the system – it contains 200 million oil-eating microbes and traps particles down to 50 micron.



3
Heated to 42°C, the microbes become active in the ROWash Degreasing solution and eat the oil and grease turning them into harmless CO² and water – effectively recycling the fluid.

The system comprises of 3 parts:

01 ROwasher Parts Cleaning Machine

This new generation manual parts washer heats to 38°C but increases to 42°C when in-use for faster contaminant removal.

With a double-skinned insulated tank and built in Eco-Mode feature, ROWasher realises around 54% energy savings compared with leading competitor.

ROWasher to suit any workshop space – static, mobile, XL.



02 ROWash Degreasing Solution

Heated to 42°C, the ROWash Degreasing Solution removes the most hardened grease and grime, washing parts clean, leaving no film or residue, and is pleasant to use.

Releases no harmful vapours or VOCs and is pH neutral and solvent-free.

NSF certified.

Range of ROWash Degreasing solutions to suit the materials you are cleaning.



03 ROWasher Microbial Filter Mat

The Microbial Filter Mat is where the magic happens! It not only traps grease and debris in its top white layer, preventing it from entering the system, it also has 200 million oil loving micro-organisms encapsulated in its blue layer.

Each new filter change releases these microbes into the system where they break down hydrocarbons and “eat” the oil and grease washed off dirty parts, turning it all into harmless carbon dioxide and water.



Leaving the parts washer fluid clean for every use, reducing the need for hazardous waste disposal and the associated costly service contract.

We have a single layer Microbial Filter Mat and a Multi-Layer option to meet more heavy-duty cleaning demand.

01 CHOOSE THE ROWASHER TO SUIT THE WAY YOU WORK



ROWASHER STATIC

Our classic design

150kg load capacity

Overall Dimensions:
W 71cm x L 86cm x H 106cm
Inside sink:
W 58cm x L 67cm x D 17cm



ROWASHER MOBILE

Cleaning where you need it

150kg load capacity

Overall Dimensions:
W 71cm x L 86cm x H 106cm
Inside sink:
W 58cm x L 67cm x D 17cm



ROWASHER XL

Extra large sink top for jobs large or small.
Can be used as a two person work station

200kg load capacity

Overall Dimensions:
W 97cm x L 126cm x H 109cm
Inside sink:
W 80cm x L 101cm x D 19cm

We have developed the ROwasher to provide the best in eco-friendly cleaning, keeping users health and safety at the forefront of our innovation, whilst allowing customers to save energy and reduce fluid usage.

- Double-skinned tank for strength, energy savings and reduced fluid usage
- 1,000 watt thermostatically controlled heater, heats fluid to 37°- 42°C
- Built-in, energy saving Eco-Mode
- 60L tank with super capacity pump - 15L per minute
- Powerful adjustable fluid flow rate via nozzle and brush
- Flow control timer
- Flexible nozzle with highly visible orange tip to control fluid aim
- Self-cleaning brush to agitate stubborn dirt
- Automatic safety switch-off if minimum solution level reached
- All electrical parts housed in a fully removable module for easy maintenance
- User-friendly, designed to be easily maintained in-house
- Made in the UK, full stock of parts available

Compliance

- ROHS
- IP65
- EN60335
- EN61000
- EN ISO 12100:2010
- European Machinery Directive MD2006/42/EC

ROWASH DEGREASING SOLUTION

ROwash Degreasing Solution is designed to degrease oily parts quickly and effectively. It is a pH neutral mix of emulsifiers and surfactants that has been specially formulated by our Scientists

- Biodegradable oil dispersant & degreaser
- Non-solvent
- Non-toxic, non-caustic and a non-hazardous
- Contains no known carcinogens
- No flash point
- Releases no vapours or VOCs
- NSF certified



ROwash is a degreasing solution that is as powerful as solvent but without the hazards.

Heated to 42°C, the ROWash Degreasing Solution removes the most hardened grease and grime, washing parts clean, leaving no film or residue, and is pleasant to use. It works hand-in-hand with our Microbial Filter Mat. The concentration of surfactant in the formula has been specially chosen by our Chemists to make the contaminants particles the smallest they can be, so the microbes can easily break them down.

This ensures the fluid stays clear for longer.

02 CHOOSE THE ROWASH SOLUTION FOR THE MATERIAL YOU ARE CLEANING



ROWASH 03

Excellent for cleaning off motor oil, grease, cutting fluids and hydraulic fluid.



ROWASH 06

For cleaning specialist metals. Not corrosive on a wide range of yellow and ferrous metals such as aluminium, iron and steel.



BIKE

ROWash Bike Degreasing Solution is a pH-neutral, biodegradable, and non-toxic degreaser, specially formulated for the cycle sector using emulsifiers and surfactants to safely disperse oil and grease.

ROWASH FLUID STAYS CLEANER FOR LONGER

Our ROWASH DEGREASING SOLUTION gives outstanding cleaning results and when combined with the ROWASHER MICROBIAL FILTER MAT provides the best in bioremediation.

- Powerful cleaning for longer.
- Degrades 83% of oil - more than any other parts washer consumables on the market.

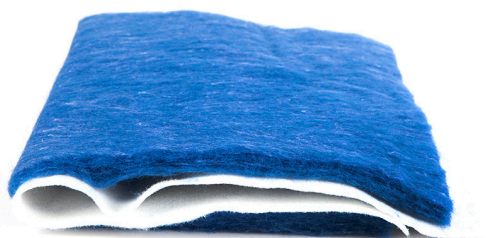
MICROBIAL FILTER MAT

The ROWasher Microbial Filter Mat is the key component of the ROWasher parts cleaning system. It is designed to deliver our microbes into the ROWasher system where they break down or “eat” oil and grease washed off dirty parts.

The top white Filter Mat layer is designed to trap large particles of dirt and debris - up to 50 microns. The blue layer provides support for the microbes to breed and grow a microbial reservoir to be released into the ROWasher.

Change the Microbial Filter Mat every month to keep the microbe colony healthy and maintain the cleaning performance of ROWasher.

03 CHOOSE THE MICROBIAL FILTER MAT TO MEET YOUR CLEANING DEMANDS



MICROBIAL FILTER MAT STANDARD SINGLE LAYER

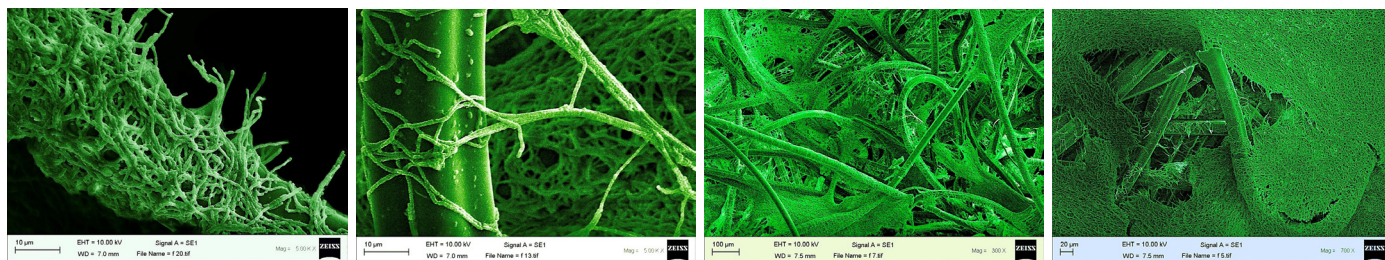
One white layer to filter debris and one blue layer housing the microbes



MICROBIAL FILTER MAT HEAVY USE MULTI LAYER

Four white layers and one blue layer – white layers designed to be peeled away once a week to remove debris and maintain performance.

We have proven scientifically that the filter mat is the best way of delivering the microbes into the ROWasher system. It acts as scaffolding for the microbes to cling, grow and breed on the fibres to form a reservoir of oil eating microbes.



This bio film means that for the month-long life of the filter, there is a constant supply of microbes degrading the hydrocarbons and maintaining the optimum cleaning performance of the ROWasher.

THE HOTWASHER SERIES

SPRAY WASH SYSTEMS

HOTWASHER

Our range of stainless steel cleaning machines are designed to degrease a number of parts in a short space of a time and clean components with hard to reach areas.



HIGH PRESSURE
CLEANING WITH
OPTIONAL HEAT

AUTOMATED,
EFFICIENT
CLEANING



ULTRASONIC
CLEANING FOR
COMPLEX
PARTS



SEMI-AUTOMATIC JETWASH SYSTEMS

The ROZONE JETWASH offers the same benefits as a manual parts washer but guarantees a faster clean. Its powerful high-pressure spray nozzle is designed for targeted cleaning and removal of stubborn contaminants from blind holes and hard to access areas – significantly reducing component cleaning time and saving on costs.

The Jetwash cabinet features a viewing window with integrated gloves and internal lighting to provide high visibility manual cleaning of parts at temperature without risk to operator safety from heat, vapour or splashes.

The twin filter system ensures fluid stays cleaner for longer between service cycles.

An air gun allows for drying of parts after cleaning.



CHOOSE YOUR JETWASH

AMBIENT

Dimensions

Load Capacity

Tank Capacity

Door Opening System

JET 2P

92 × 66cm

70kg

40L

Pneumatic

JET 3P

117 × 85cm

70kg

75L

Pneumatic

JET 4P

70 × 90cm

70kg

90L

Pneumatic

HEATED

Dimensions

Load Capacity

Tank Capacity

Door Opening System

JET 2C

95 × 66cm

70kg

40L

Single Phase

JET 3C

120 × 85cm

70kg

75L

Single Phase

JET 4C

145 × 95cm

70kg

90L

Single Phase

AUTOMATIC SPRAY WASH SYSTEMS

Looking for a faster, more powerful clean? Multiple components to wash? Designed to degrease a number of parts in a short space of time or clean components with hard to reach areas. Our stainless steel, aqueous spray wash machines provide automated cleaning that leaves technicians free to work on other tasks, increasing workshop productivity and saving on costs.

- Multiple components washed in one cycle
- Non-hazardous degreasing
- Minimal Operator involvement
- Double spray bar for faster total clean
- Sizes to suit any cleaning requirement

The combined action of temperature, pressure and chemical action allows for the removal of oils, fats, greases as well as incrustations of any kind due to mechanical use.

Hot air accumulated during the wash cycle results in rapid drying of the parts, providing an entirely automatic, cost effective and safe cleaning process.

Oil skimmer ensures fluid stays cleaner for longer between service cycles.

HOTWASH LOW FOAM

Our Aqueous Spray Wash systems use our specially designed solution - Hotwash Low Foam. Formulated by our in-house chemists and manufactured at our UK plant, Hotwash Low Foam is a rust inhibited, quick break aqueous cleaning and degreasing solution that is non-emulsifiable, low foaming and no hazard to painted surfaces, acrylics, non-ferrous metals and soft sealants. It is solvent free, VOC free and separator friendly.

All machines come with the following as standard:

- Motorised basket
- Temperature 0-120°C
- Timer 0-30min
- Electric/Phase 220-380v / 3
- Safety shut-off
- Low fluid protection



CHOOSE YOUR HOTWASH

Dimensions

Load Capacity

Tank Capacity

Door Opening System

R 60M

92 × 86cm

100 kg load

60L tank

Single Phase

R 80M

112 × 105cm

100 kg load

130L tank

Single Phase

R 60

92 × 86cm

100 kg load

60L tank

3 Phase

R 80

112 × 105cm

100 kg load

130L tank

3 Phase

R 100

147 × 175cm

200 kg load

210L tank

3 Phase

R 120

166 × 206cm

300 kg load

270L tank

3 Phase

ULTRASONIC CLEANING

ULTRASONIC

Precision cleaning for small & medium sized parts

This new range of ultrasonic machines is designed for cleaning small to medium-sized parts. They come equipped with a powerful microprocessor and specially created software which allows you to independently select the best cleaning programme for the parts being washed. This is based on temperature, number of parts and volume of fluid.

Ultrasonic
cleaning for parts
with complex
geometries

A manual potentiometer on the controls allows a "sweep setting".

This means that you can adjust the frequency modulation from 100 to 300 Hz, increasing the cleaning performance by "breaking" the stationary waves created inside the tank.



Washing Capacity
Load Capacity
Tank Capacity
Ultrasonic Power

ULTRA 25

35 × 25 × H30cm
20kg
25L
950W - 26 kHz

ULTRA 50

50 × 25 × H40cm
25kg
50L
1200W - 26 kHz

ULTRA 90

54 × 40 × H43cm
25kg
90L
1800W - 26 kHz

PRE-SOAKING

SOAK BOX

Soaking, degreasing, de-rusting

A versatile, modular system aimed at the pre-wash process. Pre-Soaking of components can be a game changer in terms of process improvement. Rather than leaving components sitting on a workbench whilst you disassemble, pop the parts into the Soak Box and let Rozone's innovative chemistry start work straight away before moving on to the next stage of the cleaning process.



- Saves labour time
- Increases workshop efficiency

The soak box can be supplied with either wheels or a handy trolley to assist in the movement and transportation of components within the workshop space.

- Easily handling
- Robust design
- Stackable and space-saving
- Resistant to acid and alkali solutions
- 100% recyclable



SURFACE TREATMENT

Now that your parts have been cleaned by our ROwasher or Hotwash machines, you may want to look at our surface treatment range.

Whether your industry is automotive, aerospace, engineering, defence, manufacturing, repair plant hire or commercial kitchen we have a fit for purpose range of professional cleaning products that deliver the best results time after time.

Our solutions have been developed to effectively, clean, protect and restore whilst safeguarding the well-being of users, ensuring efficiency, lowering costs and reducing impact on the environment.

It is our aim to help customers replace potentially hazardous chemical products with water-based or safer solvent-based solutions, offering protection to users and environmental benefits to the organisation using them.

Our range includes all-purpose maintenance sprays and penetrants, cleaners and degreaser for many surfaces including electric sensitive areas, restorers for plastics, vinyl and coated surfaces and rust removers.

To complement our cleaning chemicals, we have a range of ancillary products and PPE (Personal Protective Equipment), all carefully developed to help your Production, Maintenance, Overhaul and Repair facilities run as efficiently as possible.





REDUCE THE USE OF HARSH CHEMICALS

In today's increasingly legislative environment, there is a demand for cleaning, pollution control and other innovative technologies that benefit employees, society and the environment – at the same time delivering a reduction in operating costs and improving efficiency.

Our aim is to help companies reduce the use of harsh chemicals in their cleaning processes, safeguarding the health and safety of staff and customers, whilst lowering their impact on the environment.

We believe cleaning is not just a process, it's a science. Using the TACT principle helps us advise the best cleaning solution for our customer's individual need.

The TACT principle consists of four variables: TIME, ACTION, CHEMISTRY, and TEMPERATURE. Each of these variables affects the success of the cleaning process, and by understanding how they work together, we can provide customers with the best, most efficient solution.



The demand for our low environmental impact cleaning solutions has developed significantly since we began in 1996 and we are proud to work with a wide range of customers including Aerospace, Automotive, Engineering and Manufacturing, Defence, Cycle, Plant Hire, Government and Municipal and many more.

BECOME A DISTRIBUTOR

We have also built up a significant export business, resulting in our UK developed and manufactured technologies reaching a global audience. We work with UK and international distributors, if you would like to become one, or talk to us about own label branding please call our team on +44 (0) 121 526 8181.



For more information:

Visit: www.rozone.co.uk

Email: info@rozone.co.uk

Call: +44 (0) 121 526 8181